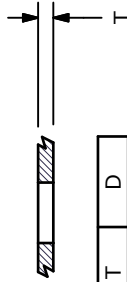
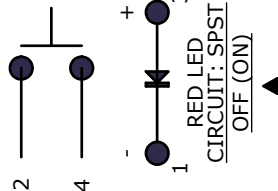


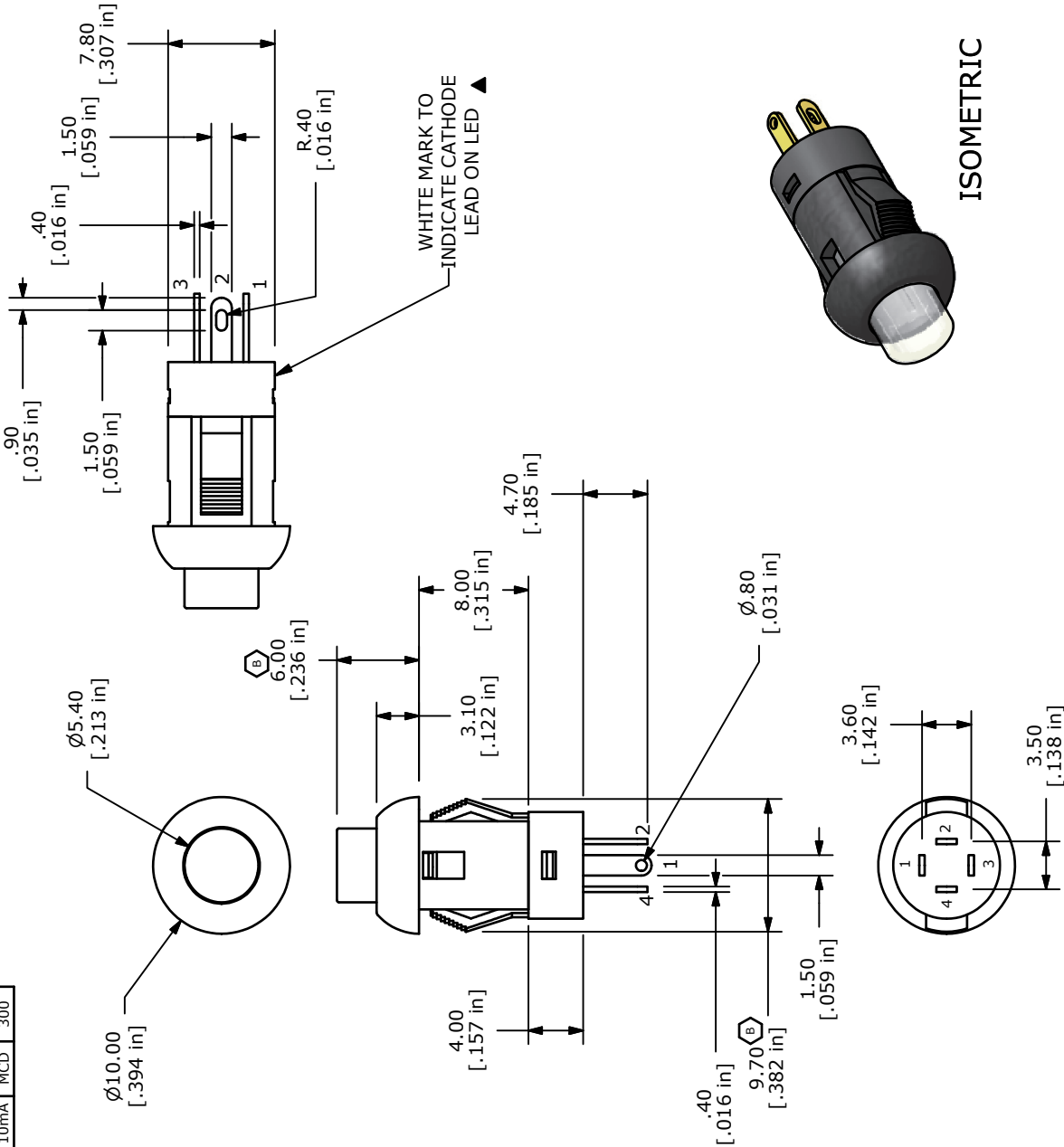
▲ LED SPECS	UNITS	RED
FORWARD CURRENT	mA	20
FORWARD VOLTAGE @20mA	V	1.5-2.4
LUMINOUS INTENSITY @ 10mA	MCD	300



T	D
1.0-2.0	8.0-8.2
2.0-2.5	8.2-8.4
2.5-3.0	8.4-8.6



- NOTES:
1. ALL DIMENSIONS IN MM [INCH]
 2. GENERAL TOLERANCE: X.X=±0.4
X.XX=±0.25
 3. RATING: 30VDC @ 100mA
 4. CONTACT RESISTANCE: 50mΩ MAX.
 5. INSULATION RESISTANCE: 100MΩ MIN@500VDC.
 6. OPERATING FORCE: 250±100gf
 7. TRAVEL: 1.8±0.3mm
 8. OPERATING TEMPERATURE: -40°C TO 85°C
 9. OPERATING LIFE: 50,000 CYCLES
 - ▲ 10. LED: RED
 - 1.1. ▲ DENOTES CRITICAL PARAMETERS
 12. 2002/95/EC (ROHS) COMPLIANT



ISOMETRIC



E-SWITCH™

TITLE LP10A1AR

B	19582	CHANGED DIMS: was 9.6 & 6.1	1/13/11	BGL
A	18259	New Release	9/24/08	rc
REV	PCR NO	DESCRIPTION	DATE	BY

THE INFORMATION CONTAINED IN THIS DOCUMENT IS PROPRIETARY TO E-SWITCH AND IS NOT TO BE COPIED OR TRANSFERRED

SCALE	2=1	DATE	7/10/2008	DR	rc	DWG	B200200	REV	B
-------	-----	------	-----------	----	----	-----	---------	-----	---