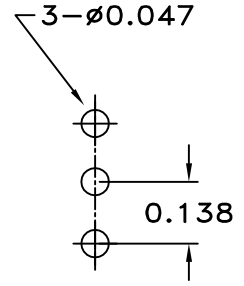
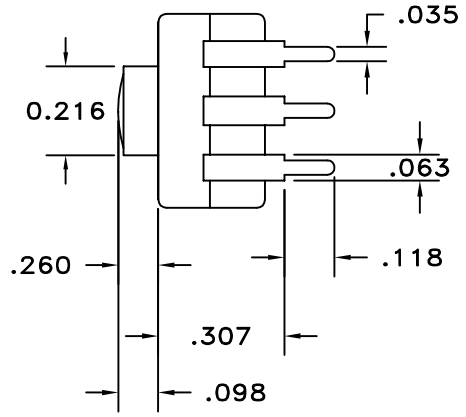
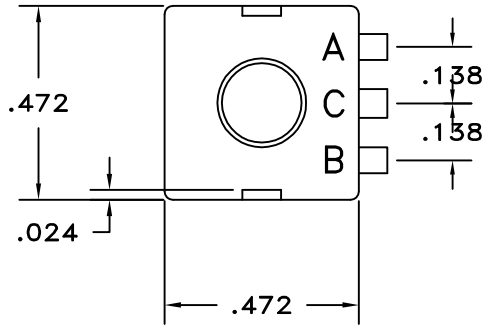
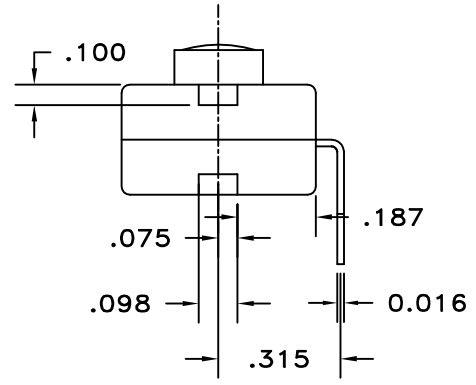


| LTR | EN | DESCRIPTION | APPR | BY | DATE |
|-----|----|--------------------------------------|------|----|----------|
| A | - | INITIAL RELEASE | RB | NH | 11-10-03 |
| A1 | - | ADDED ELECTRICAL RATING 12VDC, 500mA | MT | DC | 08-27-12 |

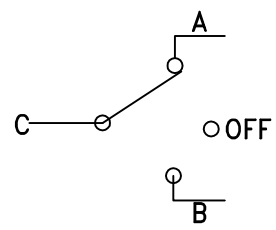


RECOMMENDED MOUNTING PATTERN

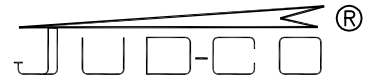


JUDCO INVENTORY NO. 50-0041-00
 SWITCH TYPE: SPDT, J 977-5 (ON A- OFF ON B)
 ELECTRICAL RATING: 12 VDC, 500mA

CUSTOMER: _____
 CUSTOMER: _____
 APPROVED BY: _____
 DATE: _____



SCHEMATIC

| | | |
|--|---|----------|
| DIMENSIONS IN INCHES DIMENSIONS ARE REFERENCE |  | |
| | HARBOR CITY CALIFORNIA | |
| DRAWN: NH 11-10-03 | TITLE MINI FLPK, J977-5 | |
| APPR: KJ 08-24-12 | ON-OFF-ON, 3 RA TRMS | |
| ENGG: IS 08-24-12 | DWG. NO. | 1415-502 |
| 1415U502A1.DWG | SHEET | 1 OF 1 |

This document embodies a product, component, and/or design proprietary to JUDCO MANUFACTURING INC., and which is protected either as a trade secret, by U.S. Patent, or by copyright. It may not be used in any way without written express consent of JUDCO MANUFACTURING INC.